



Welcome to Archibald First School  
and Our Early Years Foundation  
Stage Parents' Evening 2023  
Early Years Parents



# Nursery Team



**Mrs Ward**  
**EYFS Teacher**  
**SENDCO**  
**Forest School**  
**Teacher**



**Mrs Bramley**  
**Nursery**  
**Teacher**



**Mrs Hewitt**  
**Nursery Nurse**  
**(Mornings)**



**Mrs Yule**  
**Nursery Nurse**  
**(Afternoons)**

# Reception Team



**Mrs Watson**  
**EYFS Teacher**



**Mrs McNally**  
**Early Years Leader**  
**Reception Class 1**



**Miss Lightfoot**  
**Reception Class 1**



**Mrs Jones**  
**Reception Class 2**



**Mrs Storey**  
**HLTA**  
**Class 1**



**Mrs McCullagh**  
**Teaching Assistant**  
**Class 2**



**Miss Nicholson**  
**Teaching Support**



**Miss Knaggs**  
**Teaching Support**

# Our Early Years



Our Early Years Unit is made up of a mix of Nursery and Reception children, teachers and support staff.



# What are we about?



## **Number 1 - The children!**

Fun

Interactive

Awe and  
wonder!

Safe space

Purposeful

Engaging

Respectful

Kind and Caring



# The Foundation Stage Curriculum

Government – Baseline

7 Areas of Learning

Characteristics of learning

End of year Expectations – ELG's



# The Foundation Stage Curriculum



## Baseline

At the very start of school, all Reception aged children will take part in a Government baseline.

This is a set of activities for the children to complete within the first 2 weeks of starting school.

Nursery completes their own baseline assessment.





# The Foundation Stage Curriculum



## 7 Areas of Learning

The Foundation Stage Curriculum is what we follow in Early Years as it is a curriculum for children aged 3-5yrs. It is based around Development Matters and is split into 7 areas of learning.

All of our planning and our environment is based on these 7 areas.

- Communication and Language Development
- Personal, Social and Emotional Development
- Physical Development
- Literacy
- Mathematics
- Understanding of the World
- Creative Development





# The Foundation Stage Curriculum



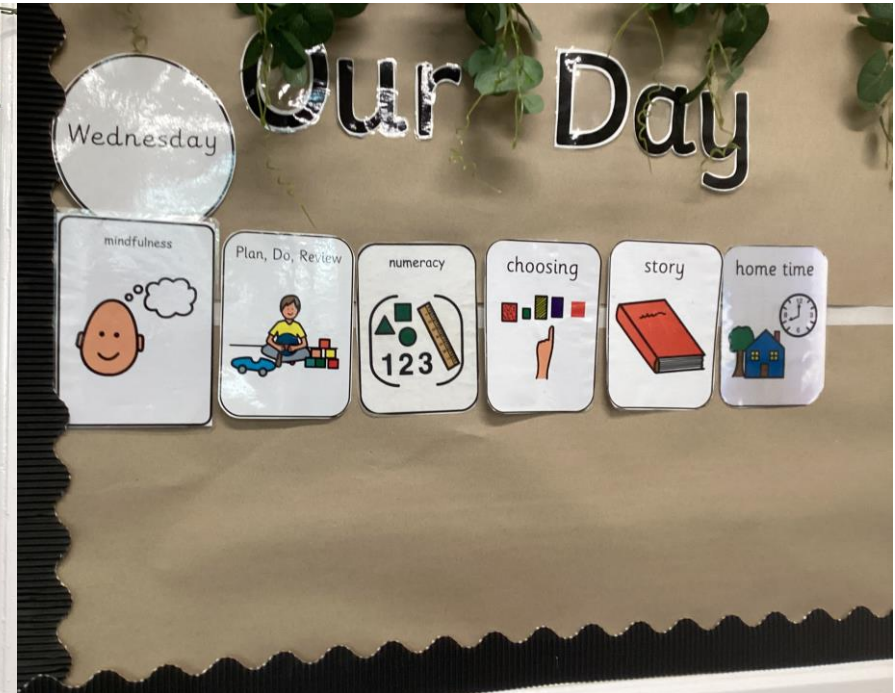
## Early Learning Goals

At the end of your child's Reception year they will be assessed informally against 17 Early Learning Goals.

They will be given a Emerging(1) or Expected grade (2).



# A typical day in Nursery



# A typical day in Reception



# In addition



- Reading for Reception – Following our Little Wandle phonics scheme (Reading meeting for Reception Autumn term)
- PE
- Forest School
- Learn Spanish with their class teachers.

- Visitors e.g.

- Brush Up
- Picollo
- Geordie Yoga
- Nurture Us
- Balance bikes (Reception)/ ARTventurers (Nursery)
- Offsite Visits





# Forest School



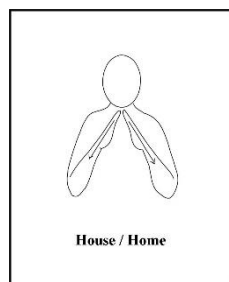
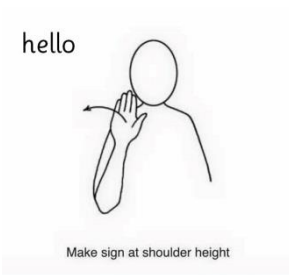


# Makaton

At Archibald, we use **Makaton**. It is a language programme using signs and symbols to help people to communicate.

It is designed to support spoken language and the signs and symbols are used with speech, in spoken word order. With Makaton, children and adults can communicate straight away using signs and symbols.

<https://www.archibaldfirstschool.org.uk/mastering-makaton/>



EAL, speech difficulties, communication

# How do you find out about what we do...



- Curriculum booklets are emailed every half term
- Curriculum coffee mornings
- Phonics sessions for Reception parents
- Stay and Play sessions
- School Website [www.archibaldfirstschool.co.uk](http://www.archibaldfirstschool.co.uk)
- Twitter @Archibaldfirst
- Tapestry
- You and Me tasks/Maths Challenges
  
- We will catch you about the super things your children do and if there are any issues we will come and talk to you.
  
- Lunch: The menus are on the website and we will let you know if they don't eat.





TAPESTRY  
ONLINE LEARNING JOURNAL



- Every child in EYFS has a Tapestry account with images added to this.
- It is used to track your children's development and progress **and** to show you what your child gets up to in Nursery or Reception
- Photographs: All staff can take pictures of the children and make comments  
– You can too!!
- Teaching staff post your images to your child's individual Learning Journey. The staff will add to assessment areas
- [See the Tapestry consent form](#) and to agree to the Acceptable Use Policy

# How are you involved?



- Share what your child can do at home ( on Tapestry)
- Tricky Word books (Reading meeting)
- You & Me Tasks– shared tasks and maths challenges
- Reading (E books) with a Reading record
- Handwriting books
- Get involved by coming on trips or joining us for Sharing week.

## Remember:

- Check for text messages and emails (we aim to be paperless)
- Check the website for information

# Nursery Uniform



Your child needs...

- Blue jumper/cardigan
- Pale blue polo shirt
- Navy trousers/skirt/dress
- White/Navy/Black tights or socks
- Black shoes – that they can unfasten/fasten themselves
- A named water bottle
- Spare clothes if appropriate

Information  
on website



**TOP TIP: Joggers give easy access to the toilet**



**NAME  
EVERYTHING!**

# In addition



Your child needs...

An outdoor/forest school outfit:

Hoodie

Waterproof coat

Waterproof trousers (not all in ones)

Pair of wellies

Drawer string bag



**PE kits are NOT needed for Nursery children**

**NAME  
EVERYTHING!**



# School Uniform



Your child needs...

- Red jumper/cardigan
- White polo shirt
- Navy trousers/skirt/dress
- Red/Navy tights or socks
- Black shoes – that they can unfasten/fasten themselves
- **PE kit to be worn on PE days.**
- A named water bottle
- Spare clothes if appropriate

Information  
on website



**Rucksacks are given to each child from the PTA as a first day gift**



**NAME  
EVERYTHING!**

# In addition



Your child needs...

## An **outdoor/forest school outfit:**

- Hoodie
- Waterproof coat
- Waterproof trousers (not all in ones)
- Pair of wellies



Information  
on website

## **Reception PE kits**

- Blue shorts/ joggers/ leggings
- Red T-shirt
- Trainers / Sand shoes
- You can also purchase a red hoodie to be worn on PE days.



**NAME  
EVERYTHING!**

# Settling in

Details on the invitation in your packs



## Proposed phasing in to Nursery and Reception

- Visit to Nursery and Reception
- In September, a phased start with groups of approximately 7-10 children
- The first day staggered starts and earlier finish – give us opportunities to talk before picking up older siblings
- Individual basis – may need to be further adapted for your child's individual needs







# Things to know

- Doors open at 8.45am with registration at 8.55am (Being on time is VERY important)
- We will show you where your child comes in to school.
- Anyone who is late for the start or end of the day must come through main entrance and you must sign in the books. Please ring if you are going to be late to pick up. Schools ends at 3.15pm.
- No in term holidays – there are 13 weeks holiday time a year and all children should be in school every day that they can be.
- Toys are not allowed in school.



# Important information for us



What would be helpful for us to know?

- How do you think your child will settle?
- Toileting – will they need help?
- Special individual issues – however big or small
- Allergies and Medications
- Other professionals involved – referrals to any doctors/health visitor involvement



# Tips for preparing your children for September



- Prepare your child by talking positively about Nursery or Reception and explaining that they will stay and play whilst you go to work or do jobs. Remind them that you/someone will always come back to collect them
- Share staff photos and talk about how the staff will look after them and care for them. The grown ups are there if they need help
- Share the school website as this gives them a sense of what happens at school
- Help your child to be as independent as possible with coats, shoes and the toilet.

# Reminders from tonight



- Name ALL items of CLOTHING: Coats, jumpers, shoes, hats, water bottles...!
- Leave children with a member of staff if they are upset as quick as possible– We will ring you!
- Be positive (even if you're nervous)
- **Ensure contact forms are returned to school ASAP**
- Check school bags and website for information
- Use Tapestry
- Open door policy: Please come and talk to us, however big or small. Please ask if you are unsure.

**We are very approachable!**



# Thank you!

- Any questions/queries
- Visit the unit