

Autumn Newsletter 1 2024

Headteacher's Message

Welcome to the 2024-2025 school year! An especially warm welcome is extended to our new families in Nursery, Reception and across the school. It is lovely to be back in school and to see all of the children in their classrooms and with their friends both old and new.

The children in our older year groups have settled in very quickly and have got straight back into learning. Nursery and Reception have also settled really well and it has been a delight being in the EYFS unit with the children as they play and learn – I may have even learnt some of the new names and faces....

OPAL (Outdoor Play and Learning) is back up and running making breaktimes full of fun, and everyone is following our rules and striving for our values.

And already we have a vast array of clubs and visits on the school calendar.

Please remember that we are here to answer any questions which you might have and to work with you for the very best outcomes for our children. Our door is always open: if you have any queries, please do not hesitate to call in to speak with us, ask a member of staff on the door at drop off / collection time or email in to office@archibaldfirstschool.co.uk. We send newsletters home regularly, at least once a month but more often if we have information and news to share.

Please Tweet (X) us @ArchibaldFirst if you see your child being #AFSCurious #AFSCaring #AFSCreative or #AFSCourageous.

Find out about each of our characters and the values here: [Curriculum - Archibald First School](#)

Curious



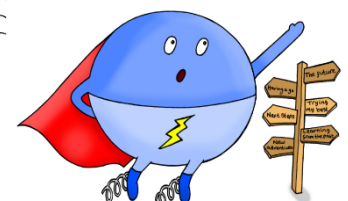
Caring



Creative



Courageous



Having fun, learning together.

Curious, caring, creative and courageous.

Reminders

Uniform

The most important thing about school uniform is that it is labelled! Every year we dispose of huge amounts of uniform, coats, hats, shoes, gloves etc which have been lost and which are not labelled. Please ensure that you have at least initialled labels in all clothes with a marker pen – expensive iron-on or sewn-in labels are great but a marker pen will do the same job!

After 9 days, our lost property box is already filling up quickly!!!



Healthy School - Snacks

All children in Reception and KS1 are offered a piece of fruit or veg each day and so do not need to bring other snacks. If you would rather send in your own snacks then they should be only fresh fruit or veg and should not be pre-packaged. The same applies to KS2 snacks from home. Grapes All grapes sent into school should be cut in half 'longways' so that they do not represent a choking hazard.

It would be great if we could encourage all our children to eat more fruit and vegetables every day!



Water



We ask all children to bring a water bottle every day. Water bottles should be named so that they don't get lost and should be taken home and washed each night so that they are clean and hygienic. We only allow children to have juice if they need it for specific reasons and these have been discussed in advance with class teachers.

Balanced Packed lunches

As a healthy school all meals prepared are balanced. We ask that parents supplying packed lunches from home consider this carefully and provide a balance of savoury and sweet along with fruit.

No pop or fizzy drinks should be included. We ask that all chocolate spread, sweets / confectionary is kept for treats at home. **No nuts (including Nutella) please!**

Having fun, learning together.

Curious, caring, creative and courageous.

Platinum School Games Mark

Prior to the summer break we were successful in achieving a Platinum School Games Mark Award for our school making us one of only 5 schools across the city of Newcastle to be awarded Platinum!!

The purpose of School Games Mark is to reward and recognise a school's engagement (provision and uptake) in the School Games against a national benchmark and to celebrate keeping young people active.



Cashpot for Schools is our mission to support primary schools across the UK.

Every time you shop with Asda Rewards from 2nd September to 30th November, we will donate 0.5% of your total spend to a primary school of your choice. Plus, Asda will pop £1 into your school's Cashpot every time someone opts in.

Even more, Asda will get your school started with a further £50. To redeem this, make sure to shop & scan and remind your school to sign up with Parentkind.

For more info, please see our **Terms & Conditions**.

You won't give up any of your own earnings, and your Cashpot will continue to grow! **Shop. Scan. We donate!**

Great, count me in

Signing up to ASDA Cashpot

As a school we are a member of ParentKind meaning that if you sign up to ASDA Cashpot for Schools it can earn money for our school when you do your shopping and you don't lose your own rewards. We would be grateful if you could sign up either by clicking this link: <https://rewards.asda.com/> Or alternatively by typing the address into your browser. On Friday we were already up to over £100..

Baby News

We are delighted to share with you that Kit Bramley entered the world on the 19th August. All of the Bramley family are doing well and we are hoping for cuddles this week when Mrs Bramley and Kit pop into school.

We also need to introduce Oliver Howard who arrived in June (sorry Mrs Howard for our late announcement). Oliver is baby brother to Georgie who is totally besotted with him. Oliver has already visited school and we hope that we get to see him again soon.



Having fun, learning together.

Curious, caring, creative and courageous.

Cycle to School Week

Can we all cycle or scoot to school next week? Fingers crossed that we see our bike and scooter storage as full as possible – not just next week but every week!

**CYCLE
TO
SCHOOL
WEEK '24**

Bring fun to the school run

Grab school by the handlebars this Cycle to School Week!
Take part 23–27 September
Find out more at cycletoschoolweek.com

Supported by

 **NatWest**
Rooster Money

Having fun, learning together.

Curious, caring, creative and courageous.

Safeguarding

Designated Person(s) for Child Protection



Archibald First School fully recognises the responsibility it has to have arrangements about safeguarding and promoting the welfare of children. We have a safeguarding and child protection policy which is updated annually and is available on request.

Our policy applies to all staff and volunteers working in the school including governors. All staff have recently undertaken Child Protection training.

The main designated safeguarding leader in school is



Rebecca Turner

If Rebecca Turner is not available contact:



Angela Ward
SEND Leader



Kym Mullick
Deputy Headteacher



Nicola McNally
Early Years



Kathryn Howard
| Key Stage 1



Sarah Graham
Key Stage 2

Playground Safety

Please make sure you leave the playground by 3:40 so we can lock the gates ready for Wraparound and other school clubs taking place on site.

Equipment

The equipment in the yard is for the children at Archibald to use after 9.00am and prior to 3.00pm.

- Equipment, toys and resources that belong to school must not be used by the children of Archibald or their siblings before or after school.
- Please do NOT allow your children to climb up the red goals – these are going to get broken. Ball games are not permitted before or after school due to congestion on the yard.
- Everyone is asked to keep off the grassed area – this includes parents waiting at the start and end of the day.
- The climbing frames are for school use only. Please do NOT use before or after school.
- Any equipment in the Nursery yard must also be left alone at the start and end of the day.
- Play sheds, boxes and shelves are not to be accessed.

Thank you for your support and encouraging everyone to be responsible and respectful.



Nuts

We are a nut free school!

We have a high number of children who have severe allergies in school. These children have adrenalin pens in schools due to the possibility of anaphylaxis.

Therefore, these items / ingredients are **NOT** allowed in packed lunches.

- whole nuts
- peanut butter (including sandwiches)
- chickpeas
- hummus
- chocolate hazelnut spread (any brand)
- nut-based sweets or biscuits including chocolate & nut-based bars/biscuits such as Nutella bars

Thank you for your care and attention regarding this, and for reducing the risk of reactions and anaphylaxis to our children.

Having fun, learning together.

Curious, caring, creative and courageous.



Coming Up...

September 2024

- 23 Year 1 to visit All Saint's Church
- 24 Author Toby Glover visiting school
- 26 Class 4 and Class 8 to Shiremoor Adventure Playground
- 27 Class 3 and Class 7 to Shiremoor Adventure Playground
- 23 Cycle to school week
- 25 Spanish Day in School – linked to the European Day of Languages
- 25 Reception and Year 1 Reading Meeting for Parents/Carers 5-6pm
- 30 Year 3 to the Great North Museum

October 2024

- 04 Durham University Workshop for year 1
- 04 Post Adoption Group Lunch 12 pm
- 04 Year 4 Forest School Day
- 08 Year 2 Forest School Day
- 11 Year 3 Forest School Day
- 11 Friday Phonics Session 1 for Reception Parents 9am
- 14 Class 9 Assembly 2.45 pm
- 15 Class 10 Assembly 2.45 pm
- 16 Individual School Photographs
- 18 Year 1 Forest School Day
- 18 Winning Team VIP Day
- 18 Friday Phonics Session 2 for Reception Parents 9am
- 23 Year 4 to Lilidorei
- 23 Class 7 Parent Lunch 12 pm
- 24 School closes at 3.15pm for the half term break
- 25 Staff Development Day: Staff will take part in Training with staff from Carr Manor for Restorative and Relational Practice



Having fun, learning together.

Curious, caring, creative and courageous.